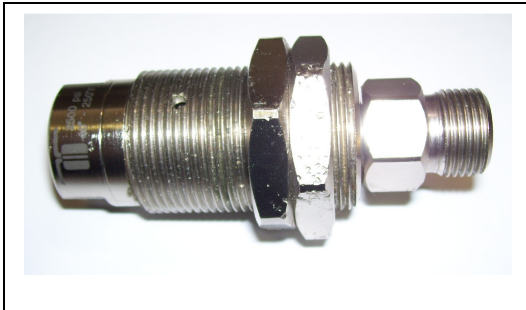
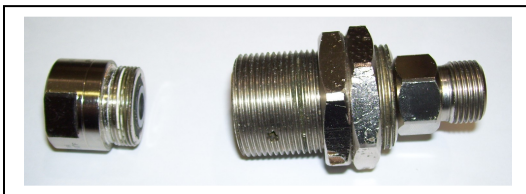


The Swivel Repair Kit PMA036903 is for seal replacement on leaking swivels only. No other repair parts are available. The open bearing on the swivel can be cleaned & re-greased if needed, but if the swivel bearings are bad, the swivel must be replaced with a new swivel.



Complete Swivel – NX100 shown. Repair procedures are the same for the NX101 swivel. Swivels NX105 & NX108 do not use jam nuts, but internal parts are the same.

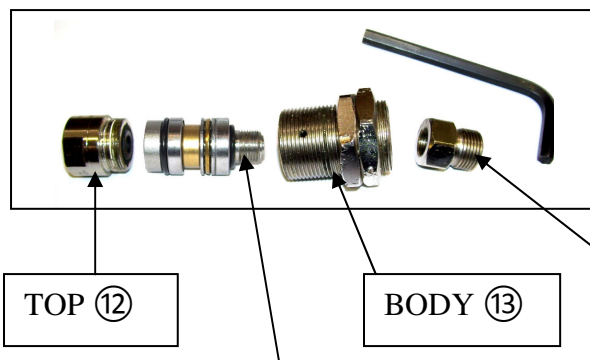
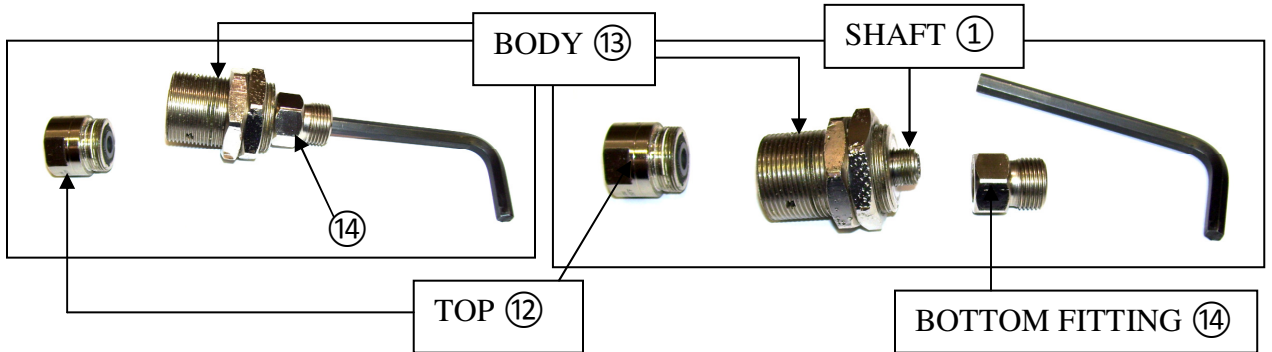
Tighten jam nuts together and place in vice or use other method to hold body of swivel while you turn top with wrench to remove top from body.



Swivel with top ⑬ removed from body ⑬

For seal replacement, the bottom fitting does not need to be removed. The seals can be replaced on the Shaft Assembly while it is still in the swivel body. (Proceed to Page 3)

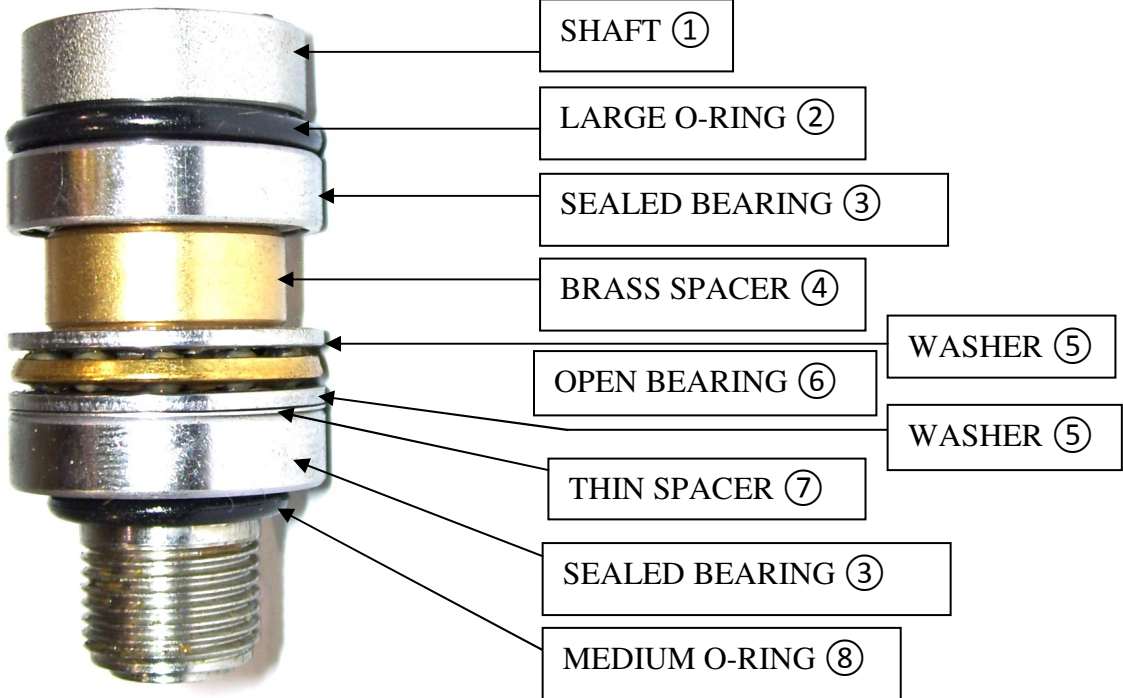
To check bearings, the bottom fitting ⑭ must be removed and the Shaft Assembly pulled from the swivel body. Place 6mm Allen wrench into bottom of swivel. Hold Allen wrench and turn bottom fitting ⑭ with 3/4” wrench to remove bottom fitting from body.



By removing the bottom fitting ⑭, the shaft assembly can be pulled out of top of the swivel body ⑬.

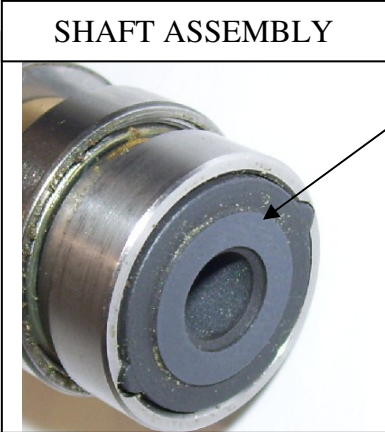
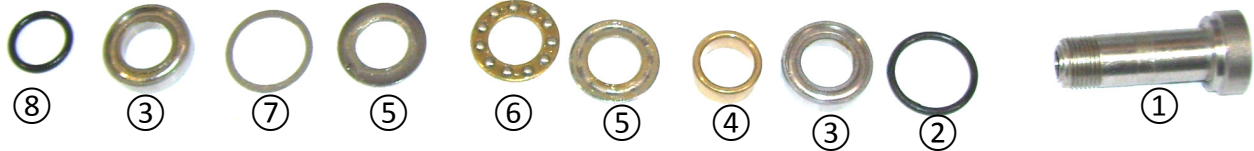
SHAFT ① (See Shaft Assembly parts breakdown on next page)

SHAFT ASSEMBLY REMOVED FROM THE SWIVEL BODY



WASHER ⑤

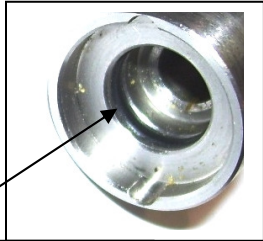
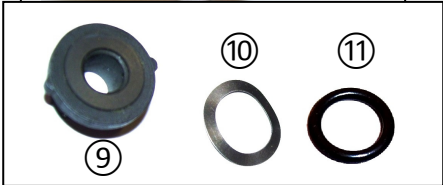
WASHER ⑤



CERAMIC SEAT (shown in Shaft ①)

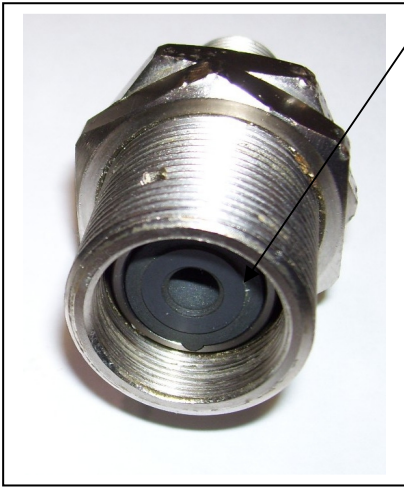
Cupped washer ⑩ is located directly under ceramic seat ⑨. Small o-ring ⑪ goes into groove in shaft ①.

One set of Seals (Ceramic Seat ⑨, Cupped Washer ⑩ & Small O-Ring ⑪) is installed in the swivel top ⑫ and one set of seals installed in the shaft ①.



SMALL O-RING ⑪ (shown in shaft groove)

CERAMIC SEAT ⑨ (shown in Shaft ① inside Swivel Body ⑬)



Cupped washer ⑩ is located directly under ceramic seat.
Small o-ring ⑪ goes into the groove in the shaft ①.

One set of Seals (Ceramic Seat ⑨, Cupped Washer ⑩ & Small O-Ring ⑪) is installed in the swivel top ⑫ and one set of seals installed in the shaft ①.

CERAMIC SEAT ⑨ (shown in Swivel Top ⑫)



SMALL O-RING ⑪ (shown in Swivel Top groove)

CERAMIC SEAT ⑨



Swivel Top ⑫

CUPPED WASHER ⑩



SWIVEL REPAIR KIT

PMA036903

Kit Includes:

2 – Ceramic Seats

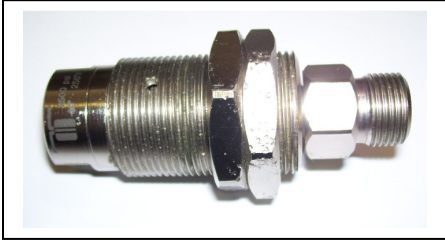
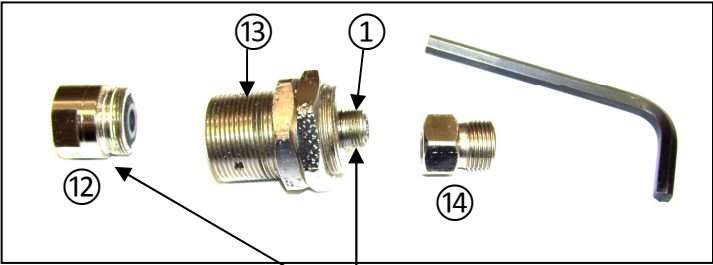
2 – Cupped Washers

2 – O-Rings

1 – Seat Puller Tool

1 – Tube Loctite 242 - Blue

After the seals have been replaced, apply the Loctite 242 to the threads of the swivel top (12) & shaft (1).
 Thread swivel top (12) into swivel body (13).
 Thread swivel bottom (14) fitting onto shaft (1) threads.

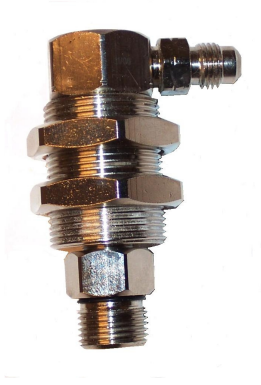


Apply Loctite 242 (Blue - Medium)



NX100

Used on:
 Turbo AW42
 Mini-Turbo AW43
 SX-12 AW104
 SX-7 AW101
 SX-7 AR54G



NX101

Used on:
 SX-12 AW104
 SX-7 AW101
 SX-7 AR54G



NX105

Used on:
 SX-15 AW105
 CX-15 AW115



NX108

Used on:
 New SX-7 AW100